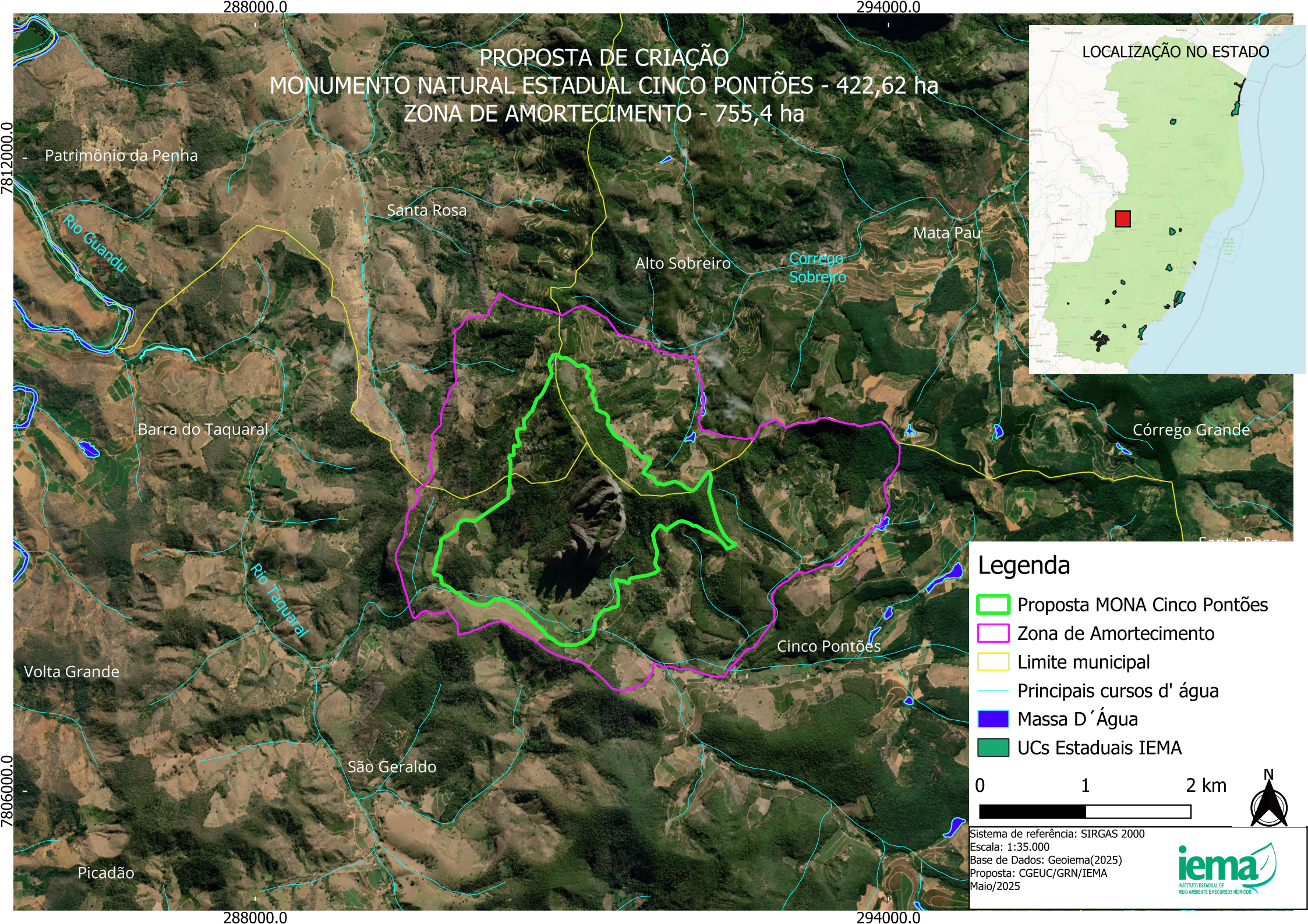
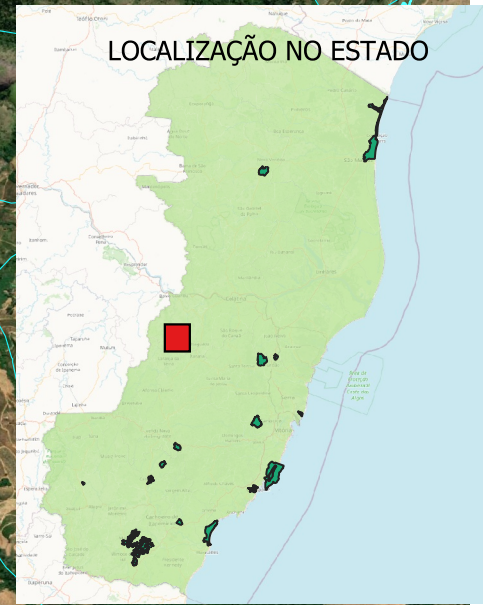






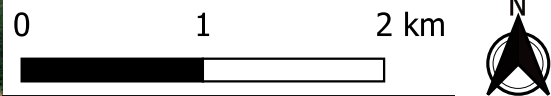


PROPOSTA DE CRIAÇÃO
MONUMENTO NATURAL ESTADUAL CINCO PONTÕES - 422,62 ha
ZONA DE AMORTECIMENTO - 755,4 ha



Legenda

-  Proposta MONA Cinco Pontões
-  Zona de Amortecimento
-  Limite municipal
-  Principais cursos d' água
-  Massa D' Água
-  UCs Estaduais IEMA



Sistema de referência: SIRGAS 2000
Escala: 1:35.000
Base de Dados: Geoiema(2025)
Proposta: CGEUC/GRN/IEMA
Maio/2025

